

## WASTE MANAGEMENT IN CONCRETE INDUSTRY

Receiving concrete returns in recycling tipper

Excess orders and concrete scrap are received in special hardening tippers.



*CEMBOX tipper with concrete waste*

Once full, the tipper is taken to a recycling site where the hardened concrete block will be crushed.



*Detachment of a concrete block*

The purity of crushed concrete promotes its recovery into eco-aggregates of the quality required for the manufacture of new concretes.

## Treatment of wash water on sedimentation platform

Cleaning water from manufacturing and transport equipment is repainted on an inclined platform where heavy elements are deposited. These sediments are recovered in a hardening cell until they become an inert embankment. This product of the concrete activity is converted into digging in materials.

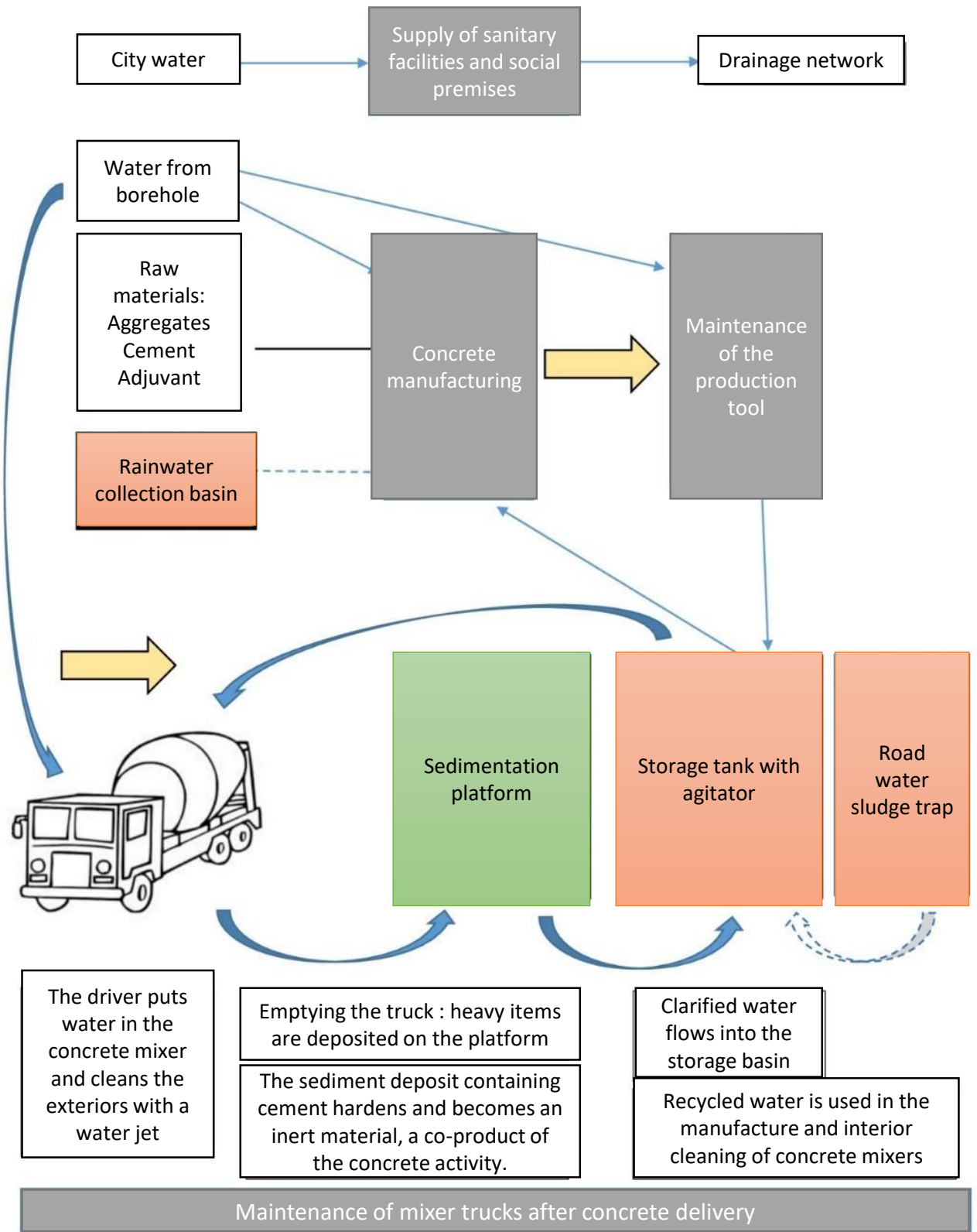


*Plant sedimentation platform*

Water is recovered at the exit of the platform in a pond often equipped with an agitator propeller. That decanted water is reused for the interior cleaning of the truck mixers and in the manufacture of new concrete.

The plant operates in zero discharge; the heavy elements are upgraded, and all water is reused.

**Process diagram and water use in a plant**



Maintenance of mixer trucks after concrete delivery